

REFERENCES

- Bourret, R. (1941): Comment déterminer une Tortue d'Indochine. *Bull. Inst. Publ. Hanoi* 9 (21): 1-40, pl. 1.
 Vallant, L. & G. Grandidier (1910): Histoire . . . de Madagascar, vol. 17, Histoire Naturelle des Reptiles. (1) Crocodiles et Tortues. Paris, France: 1-86.
 Wermuth, H. & Mertens, R. (1961): Schildkröten, Krokodile, Brükenechsen. Jena, Germany: 1-422, figs. 1-270.

12. NOTES ON THE RED COTTON BUG (*DYSDERCUS CINGULATUS* FABR.)

I must confess to a certain amount of surprise on reading Mr. McCann's record of *Calotes versicolor* and *C. rouxi* as major predators of the Red Cotton Bug (1962, *J. Bombay nat. Hist. Soc.* 59 : 680).

Apart from the fact that the genus *Dysdercus* are almost perfect text-book illustrations of an aposematic insect, an East African species, considerably less striking in colour than *D. cingulatus*, is definitely distasteful to toads, which I have always considered as the least discriminating of reptilian and amphibian insectivores. The *Dysdercus* visits my mercury vapour lamp in small numbers and is almost always avoided by the attendant toads, but occasionally, perhaps due to the colour changes caused by the light, one is caught and is then invariably spat out and the inside of the mouth scraped by the forelegs with every appearance of disgust.

P.O. BOX 5026,
 MOMBASA,
 EAST AFRICA,
 January 11, 1963.

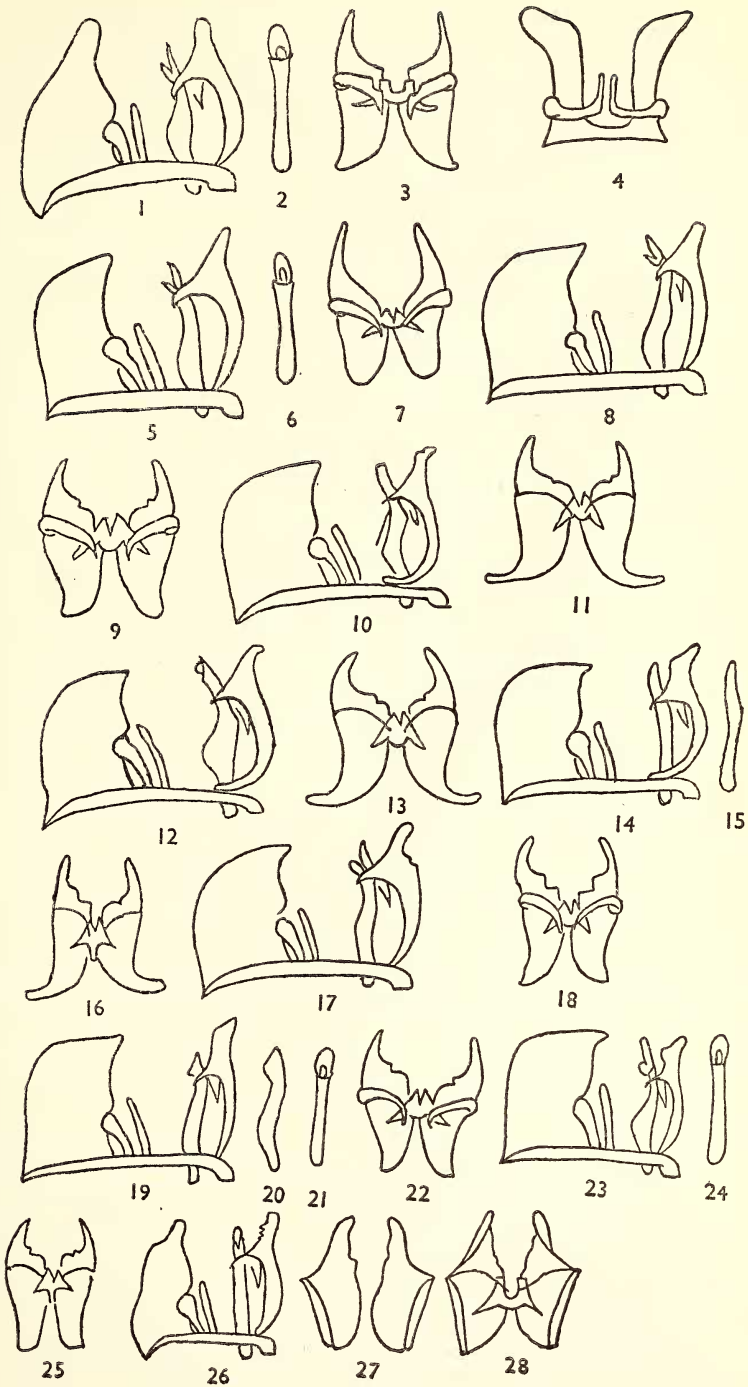
D. G. SEVASTOPULO, F.R.E.S.

13. GENITALIA OF THE BUTTERFLY GENUS *SPINDASIS* WALLENGREN

(With a plate)

The drawings on the plate are as follows:

Figure (1) Armature of *syama peguanus*; (2) ventral aspect of its aedeagus; (3) inside of its clasps; (4) diagrammatic view of inside of the uncus of *syama* but representing all the species; (5-7) *lohita himalayanus*; (8-9) *vulcanus fusca*; (10-11) *elima*; (12-13) *ictis*; (14-16) *nubilus*; (17-18) *gabriel*; (19-22) *schistacea*; (23-25) *nipalicus* both ssp. *sani* and *nipalicus*; (26-28) *maximus*.



Genitalia of butterfly genus *Spindasis* Wallengren

